



Northumberland Road, Leamington Spa, CV32 6HD

**SHELDON  
BOSLEY  
KNIGHT** LAND AND  
PROPERTY  
PROFESSIONALS

# Property Description

This spacious two bedroom ground floor apartment is positioned on the corner of Northumberland Road and Kenilworth Road - an old school house which was converted in 2002 by Laing's, to a high specification and carefully retaining many original features throughout.

Briefly comprising: entrance hallway leading to a breakfast kitchen with range of integrated appliances, large bright living room with communal garden outlook and dining space, two generous double bedrooms with built in wardrobes - bedroom one with ensuite shower room, further shower room and storage cupboard to hallway.

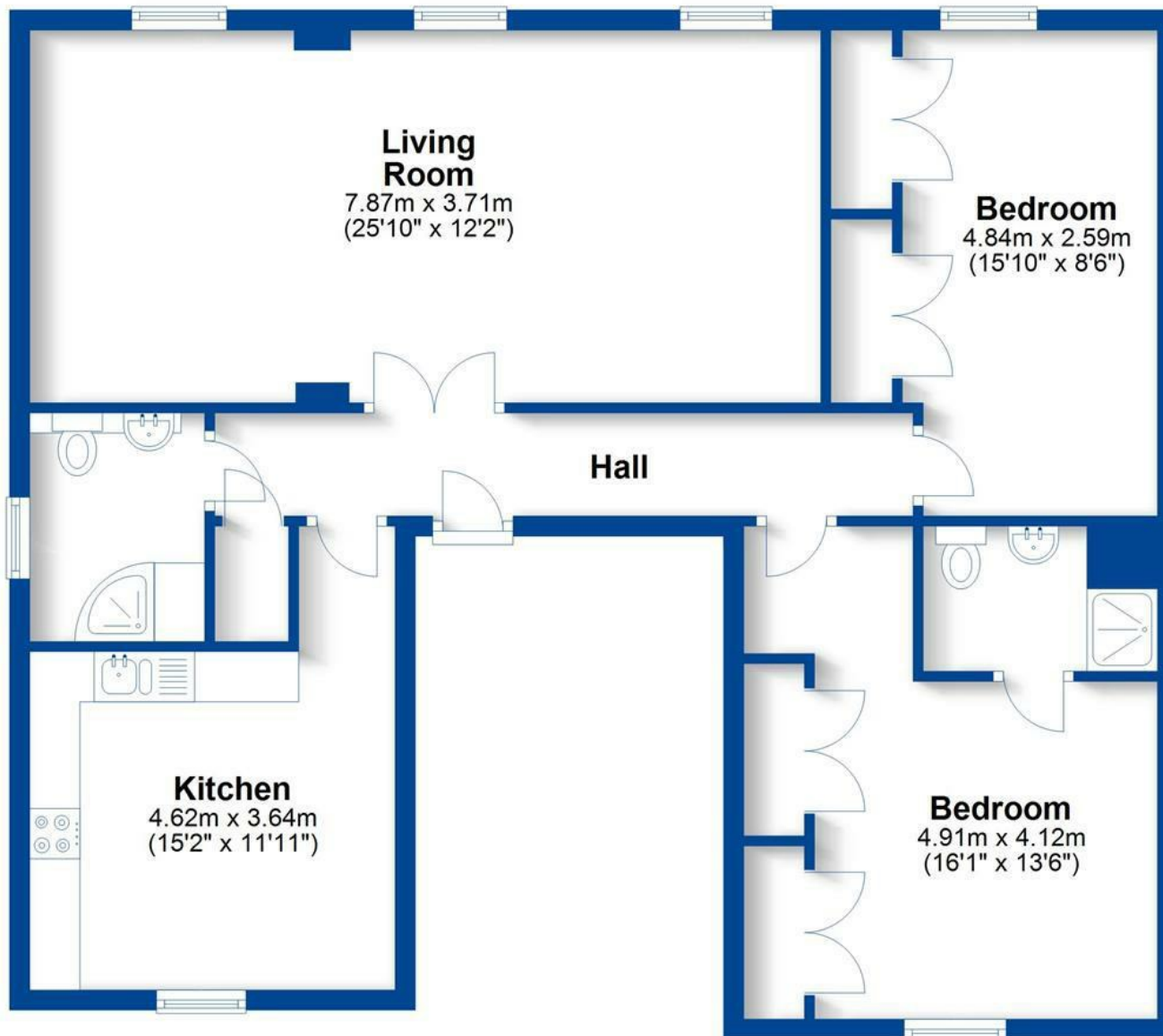
Outside there are two allocated parking spaces and pleasant communal grounds





## Ground Floor

Approx. 92.3 sq. metres (993.1 sq. feet)



Total area: approx. 92.3 sq. metres (993.1 sq. feet)

This plan is for illustration purposes only and should not be relied upon as a statement of fact  
Property of Sheldon Bosley Knight Limited. Not to be reproduced

## Key Features

- Ground Floor Apartment
- 2 Bedrooms
- 2 Bathrooms
- Two Allocated Parking Spaces
- Communal Gardens
- Energy Rating E
- Sought after north Leamington location

